

# \$2,150,000 - 290002 Township Road 292, Rural Rocky View County

MLS® #A2238047

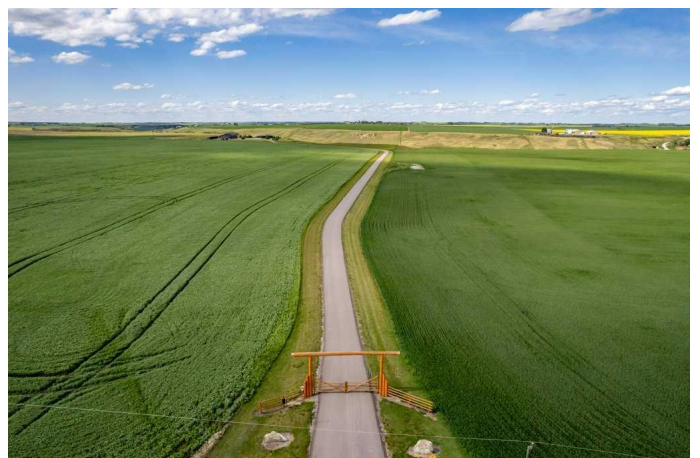
**\$2,150,000**

3 Bedroom, 3.00 Bathroom, 1,742 sqft  
Residential on 79.49 Acres

NONE, Rural Rocky View County, Alberta

An equestrian dream awaits on this immaculate 79.5-acre property east of Crossfield, designed with horse lovers and outdoor enthusiasts in mind. Fully paved to your doorstep, this impeccable set up features a lovely 3 bedroom ranch bungalow w/ 3128 sf total development with wrap around deck and beautiful landscaping overlooking a pastoral coulee and creek to the North.

At the heart of the property is a heated 6,000 sq ft shop/barn with oversized doors, in-floor heat, and a comfortable self-contained guest area (not permitted as an ADU). The barn includes a drive-through bay for easy livestock handling or parking your motorhome/ truck & trailer (19' x 58'), a large shop area (44' x 29.5'), gorgeous barn with four oversized box stalls, tie-stall space, a vet-grade walkthrough bath/vetting station with hot and cold water, and a well-appointed tack room/office. This building has two bathrooms, one on the lower area with a shower and a second on the upper floor as well as laundry. Outside you will love the professional 140' x 220' outdoor arena with roping boxes, an alley for cattle, and an adjacent holding pen, perfect for your multidisciplinary equestrian pursuits. There are six 50' x 15' turn out pens, each with shelters, auto waterers and feeders. There are several grass pastures and approximately 60 acres are leased annually for crop, offering added



versatility and farm income potential.

The house has modern country charm, nestled on a hillside to take full advantage of stunning coulee and creek views, enjoyed from the massive wraparound veranda. Inside, the home offers a comfortable and versatile layout with a custom kitchen featuring granite countertops, a 36" Capital gas range with a pot filler, prep island with seating and ample dining space. The kitchen flows into a bright living room with cozy gas fireplace and a large formal dining area perfect for entertaining.

There are two bedrooms on the main floor, including one with a 3 piece ensuite bath with access to the covered deck. Downstairs the beautifully finished walkout basement is a private retreat with a spa-inspired primary suite including a large walk-in closet, ensuite, laundry, and garden doors opening to a hot tub-ready patio. A generous second living room featuring custom built-ins and full bar area complete the lower level, offering space and comfort for both relaxation and entertaining. The house has a double attached heated garage with epoxy floor which is currently being used as a man cave/ gym space.

Conveniently located just 20 minutes north of Calgary International Airport and only 5 minutes from Irvine's Western Store this property combines rural tranquility with unbeatable accessibility. Pavement leads right to the front door, and the home is set well back from the road, offering exceptional privacy. A secure Command Gate ensures controlled access and added peace of mind, while page wire fencing surrounds the yard to keep your four-legged companions safe. Ag-Gen zoning. GST applicable.

Built in 2010

## **Essential Information**

MLS® #	A2238047
Price	\$2,150,000
Bedrooms	3
Bathrooms	3.00
Full Baths	2
Half Baths	1
Square Footage	1,742
Acres	79.49
Year Built	2010
Type	Residential
Sub-Type	Detached
Style	Acreage with Residence, Bungalow
Status	Active

### Community Information

Address	290002 Township Road 292
Subdivision	NONE
City	Rural Rocky View County
County	Rocky View County
Province	Alberta
Postal Code	T0M 0S0

### Amenities

Parking Spaces	10
Parking	Double Garage Attached
# of Garages	2

### Interior

Interior Features	Bar, Bookcases, Ceiling Fan(s), Central Vacuum, Granite Counters, Kitchen Island
Appliances	Dishwasher, Gas Stove, Range Hood, Refrigerator, Washer/Dryer
Heating	Forced Air, Natural Gas
Cooling	None
Fireplace	Yes
# of Fireplaces	1
Fireplaces	Gas
Has Basement	Yes
Basement	Finished, Full

### Exterior

Exterior Features	Fire Pit, Private Entrance, Private Yard
Lot Description	Farm, Landscaped, Pasture, Views
Roof	Metal
Construction	Composite Siding
Foundation	ICF Block, Poured Concrete

**Additional Information**

Date Listed	July 8th, 2025
Days on Market	36
Zoning	A_GEN

**Listing Details**

Listing Office	CIR Realty
----------------	------------

Data is supplied by Pillar 9â„¢ MLS® System. Pillar 9â„¢ is the owner of the copyright in its MLS® System. Data is deemed reliable but is not guaranteed accurate by Pillar 9â„¢. The trademarks MLS®, Multiple Listing Service® and the associated logos are owned by The Canadian Real Estate Association (CREA) and identify the quality of services provided by real estate professionals who are members of CREA. Used under license.