

\$319,000 - 41 Hawthorne Place N, Lethbridge

MLS® #A2237054

\$319,000

4 Bedroom, 3.00 Bathroom, 1,064 sqft

Residential on 0.17 Acres

Park Meadows, Lethbridge, Alberta

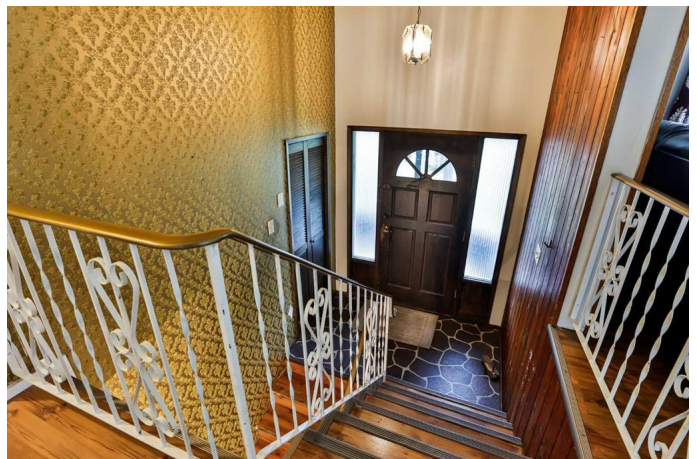
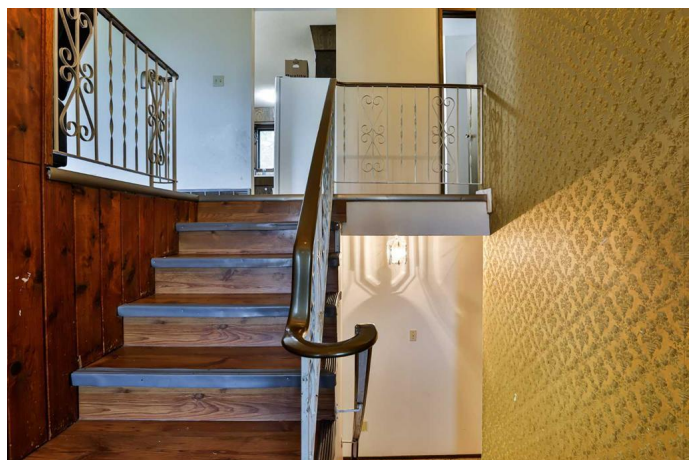
Investment Opportunity in North Lethbridge! Tucked away in a quiet cul-de-sac, this spacious 4-bedroom, 2-bathroom bi-level, rare walkout basement gives you plenty of opportunities. Sitting on a generous 7,350 sq ft lot, the property features an attached garage, ample off-street parking, and a functional layout ideal for accommodating tenants or extended family.

Whether you're looking to expand your portfolio with a reliable income property or explore future development options (subject to city approval), this home presents a rare chance to invest in a sought-after residential area. Located close to schools, parks, public transit, and essential amenities - the location supports both strong tenant appeal and future resale value. Call your Favorite REALTOR® today to book a viewing!

Built in 1975

Essential Information

MLS® #	A2237054
Price	\$319,000
Bedrooms	4
Bathrooms	3.00
Full Baths	2
Half Baths	1
Square Footage	1,064



Acres	0.17
Year Built	1975
Type	Residential
Sub-Type	Detached
Style	Bi-Level
Status	Active

Community Information

Address	41 Hawthorne Place N
Subdivision	Park Meadows
City	Lethbridge
County	Lethbridge
Province	Alberta
Postal Code	T1H4L7

Amenities

Parking Spaces	6
Parking	Concrete Driveway, Garage Door Opener, Single Garage Attached
# of Garages	6

Interior

Interior Features	Separate Entrance
Appliances	Central Air Conditioner, Dishwasher, Electric Stove, Garage Control(s), Refrigerator, Washer/Dryer
Heating	Forced Air, Natural Gas
Cooling	Central Air
Fireplace	Yes
# of Fireplaces	1
Fireplaces	Wood Burning Stove
Has Basement	Yes
Basement	Exterior Entry, Finished, Full, Walk-Up To Grade

Exterior

Exterior Features	Private Yard
Lot Description	Cul-De-Sac, Wooded
Roof	Asphalt/Gravel
Construction	Wood Frame
Foundation	Poured Concrete

Additional Information

Date Listed	July 13th, 2025
Days on Market	19
Zoning	R-L

Listing Details

Listing Office	Initia Real Estate
----------------	--------------------

Data is supplied by Pillar 9â„¢ MLSÂ® System. Pillar 9â„¢ is the owner of the copyright in its MLSÂ® System. Data is deemed reliable but is not guaranteed accurate by Pillar 9â„¢. The trademarks MLSÂ®, Multiple Listing ServiceÂ® and the associated logos are owned by The Canadian Real Estate Association (CREA) and identify the quality of services provided by real estate professionals who are members of CREA. Used under license.