

\$597,000 - 28 Whiteridge Place Ne, Calgary

MLS® #A2235545

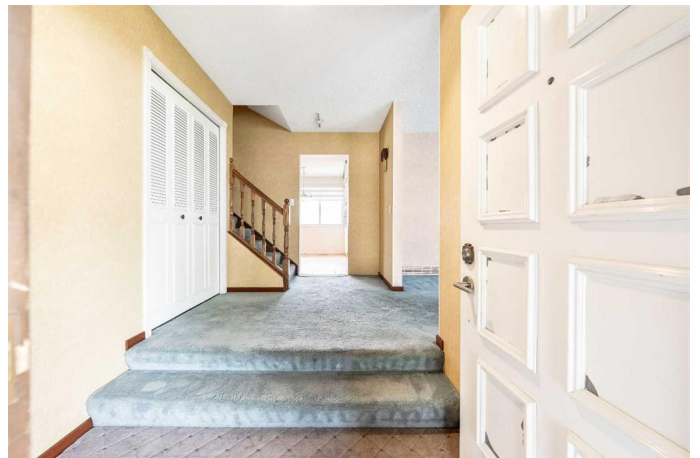
\$597,000

4 Bedroom, 4.00 Bathroom, 1,790 sqft

Residential on 0.16 Acres

Whitehorn, Calgary, Alberta

An incredible opportunity awaits a growing family in the heart of Whitehorn. Tucked away on a quiet cul-de-sac and nestled on a large pie-shaped lot with a sunny west-facing backyard, this spacious two-storey split home offers 2,450 square feet of developed living space—providing ample room to grow, play, and thrive. With 4 spacious bedrooms, 3 full bathrooms, and a generous half bathroom, there's plenty of room for family and guests alike. Just steps from green space and a playground, it's an ideal setting for families seeking both community and convenience. The main floor offers a well-appointed layout with formal living and dining rooms, with the true heart of the home in its open kitchen area that overlooks the inviting family room, complete with a cozy fireplace—perfect for gatherings or relaxed evenings in. Enjoy your morning coffee in the bright nook area, where natural light pours in, creating a cheerful start to the day. The family room opens directly onto the patio and fully fenced backyard, offering a peaceful outdoor oasis ideal for soaking up the sun or entertaining friends and family. Children will love the huge backyard, which provides plenty of room to run, explore, and play freely. Upstairs, you'll find three generously sized bedrooms, including a primary suite complete with a private 4-piece ensuite and a spacious walk-in closet. The fully developed basement adds even more versatility, featuring a large recreation room, an additional 4th bedroom



(note: it does not meet legal egress requirements), and a fully renovated bathroomâ€”ideal for guests, teens, or extended family. Notable updates include a renovated basement, newer shingles (2012), dual furnaces, and dual humidifiersâ€”ensuring year-round comfort and efficiency. Ideally located just minutes from the Whitehorn LRT station, shopping centres, schools, parks, and Peter Lougheed Hospital, this home offers an exceptional blend of space, functionality, and location. With endless potential to personalize and make it your own, homes of this size and setting rarely become available at this price point. Donâ€™t miss your chance to call it home.

Built in 1976

Essential Information

MLS® #	A2235545
Price	\$597,000
Bedrooms	4
Bathrooms	4.00
Full Baths	3
Half Baths	1
Square Footage	1,790
Acres	0.16
Year Built	1976
Type	Residential
Sub-Type	Detached
Style	2 Storey Split
Status	Active

Community Information

Address	28 Whiteridge Place Ne
Subdivision	Whitehorn
City	Calgary
County	Calgary
Province	Alberta

Postal Code T1Y 2Y6

Amenities

Parking Spaces 4
Parking Double Garage Attached, Front Drive
of Garages 2

Interior

Interior Features Ceiling Fan(s), Chandelier, Closet Organizers, No Animal Home, No Smoking Home, Open Floorplan, Storage
Appliances Dishwasher, Dryer, Electric Stove, Garage Control(s), Refrigerator, Washer, Window Coverings
Heating Fireplace(s), Natural Gas, Mid Efficiency
Cooling None
Fireplace Yes
of Fireplaces 1
Fireplaces Brick Facing, Family Room, Wood Burning
Has Basement Yes
Basement Finished, Full

Exterior

Exterior Features Private Yard
Lot Description Back Lane, Back Yard, Cul-De-Sac, Front Yard, Pie Shaped Lot, Private
Roof Asphalt Shingle
Construction Brick, Wood Frame
Foundation Poured Concrete

Additional Information

Date Listed June 30th, 2025
Days on Market 10
Zoning R-CG

Listing Details

Listing Office Real Estate Professionals Inc.

Data is supplied by Pillar 9â„¢ MLS® System. Pillar 9â„¢ is the owner of the copyright in its MLS® System. Data is deemed reliable but is not guaranteed accurate by Pillar 9â„¢. The trademarks MLS®, Multiple Listing Service® and the associated logos are owned by The Canadian Real Estate Association (CREA) and identify the quality of services provided by real estate professionals who are members of CREA. Used under license.