

\$400,000 - Nw-8-101-17-w5, Rural Mackenzie County

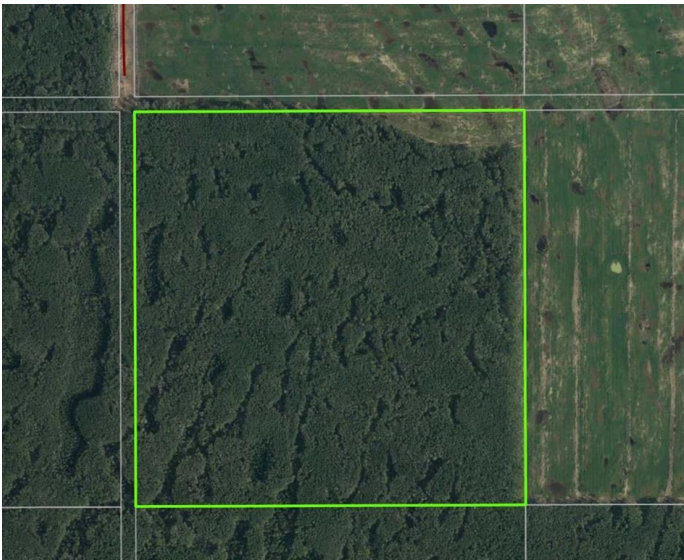
MLS® #A2214768

\$400,000

0 Bedroom, 0.00 Bathroom,
Agri-Business on 157.90 Acres

NONE, Rural Mackenzie County, Alberta

Fully Treed Parcel with Merchantable Timber and Future Farmland Potential
This fully treed property features merchantable timber throughout, offering value that can be realized prior to clearing for agricultural use. The land is well-suited for future farmland development, with good natural features and workable terrain. Taking offers until May 31, 2025, offers will be reviewed by June 4, 2025



Essential Information

| | |
|-----------|---------------|
| MLS® # | A2214768 |
| Price | \$400,000 |
| Bathrooms | 0.00 |
| Acres | 157.90 |
| Type | Agri-Business |
| Sub-Type | Agriculture |
| Status | Active |

Community Information

| | |
|-------------|------------------------|
| Address | Nw-8-101-17-w5 |
| Subdivision | NONE |
| City | Rural Mackenzie County |
| County | Mackenzie County |
| Province | Alberta |
| Postal Code | T0H 2H0 |

Additional Information

| | |
|-------------|------------------|
| Date Listed | April 24th, 2025 |
|-------------|------------------|

| | |
|----------------|---|
| Days on Market | 8 |
| Zoning | A |

Listing Details

| | |
|----------------|------------------------------|
| Listing Office | Grassroots Realty Group Ltd. |
|----------------|------------------------------|

Data is supplied by Pillar 9â„¢ MLS® System. Pillar 9â„¢ is the owner of the copyright in its MLS® System. Data is deemed reliable but is not guaranteed accurate by Pillar 9â„¢. The trademarks MLS®, Multiple Listing Service® and the associated logos are owned by The Canadian Real Estate Association (CREA) and identify the quality of services provided by real estate professionals who are members of CREA. Used under license.