

# \$23,070 - 203 2 Avenue E, Hanna

MLS® #A2210639

**\$23,070**

0 Bedroom, 0.00 Bathroom,  
Land on 0.09 Acres

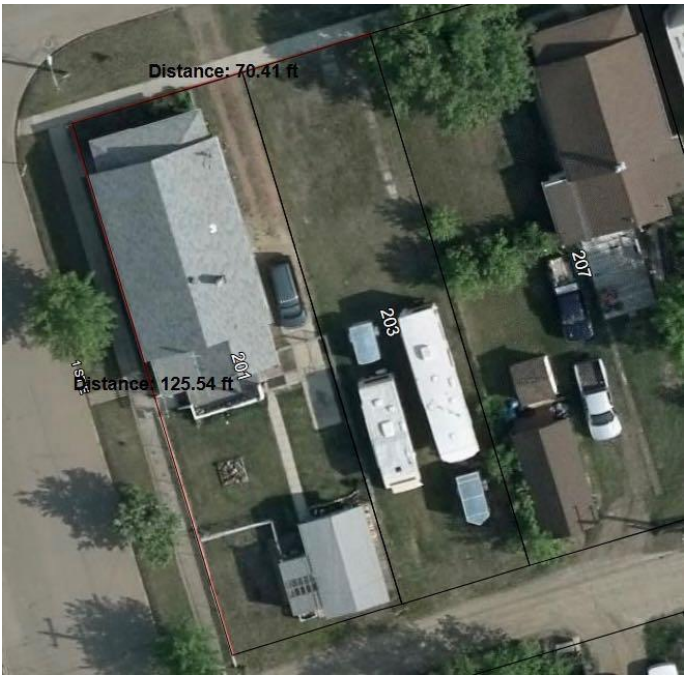
Hanna, Hanna, Alberta

This R-2 zoned residential lot offers the perfect opportunity to build your dream home—whether you prefer a custom build or a high-quality factory-built modular home.

Located in a well-established, welcoming community, the property is close to everything you need: shopping, parks, post office, banks, schools, and dining options are all just minutes away. You'll love the peaceful surroundings and open space, all while staying conveniently connected to everyday essentials.

Whether you're ready to build now or planning a future investment, this is a rare chance to own in a prime location.

Don't miss out—your future home starts here!



## Essential Information

MLS® #	A2210639
Price	\$23,070
Bathrooms	0.00
Acres	0.09
Type	Land
Sub-Type	Residential Land
Status	Active

## Community Information

Address	203 2 Avenue E
---------	----------------

Subdivision	Hanna
City	Hanna
County	Special Area 2
Province	Alberta
Postal Code	T0J1P0

### **Exterior**

Lot Description	Irregular Lot
-----------------	---------------

### **Additional Information**

Date Listed	April 10th, 2025
Days on Market	134
Zoning	R2

### **Listing Details**

Listing Office	Real Estate Centre
----------------	--------------------

Data is supplied by Pillar 9â„¢ MLS® System. Pillar 9â„¢ is the owner of the copyright in its MLS® System. Data is deemed reliable but is not guaranteed accurate by Pillar 9â„¢. The trademarks MLS®, Multiple Listing Service® and the associated logos are owned by The Canadian Real Estate Association (CREA) and identify the quality of services provided by real estate professionals who are members of CREA. Used under license.