

# \$574,900 - 253 Waterford Way, Chestermere

---

MLS® #A2208242

**\$574,900**

3 Bedroom, 3.00 Bathroom, 1,571 sqft  
Residential on 0.07 Acres

NONE, Chestermere, Alberta

SEPTEMBER POSSESSION\*\*\*UNDER CONSTRUCTION\*\*\*Welcome to this beautifully designed, pre-construction home that offers both luxury and functionality. Featuring a spacious front-attached garage, this home is packed with high-end upgrades throughout, ensuring comfort and style at every turn.

Key Features Include:

Expansive 9 ft ceilings that create a bright and open atmosphere, making the home feel even larger and more inviting.

Quartz countertops in the kitchen and bathrooms, offering durability and elegance for years to come.

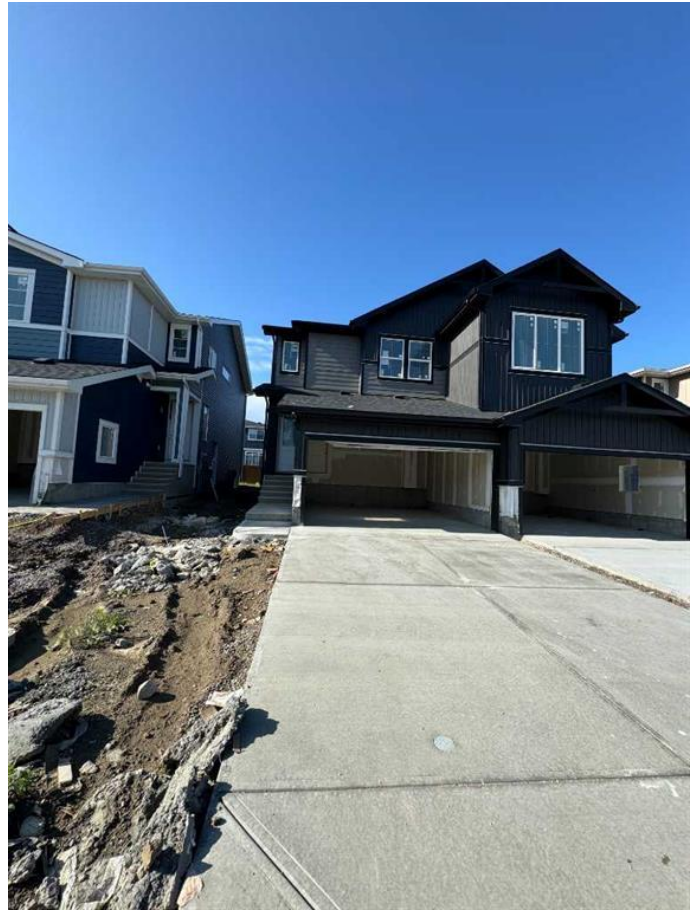
Soft-close cabinetry in the kitchen and bathrooms, adding a touch of sophistication and ensuring quiet, effortless use.

Undermount sinks in the kitchen and bathrooms for a sleek, modern look.

8 ft doors that enhance the home's elegant appeal and provide a sense of grandeur.

A luxurious dual vanity ensuite, complete with a full tile shower—the perfect space for relaxation and rejuvenation.

This home is also ideally situated close to a playground, making it an excellent choice for families. Additionally, it features a side entrance, providing convenient access and adding flexibility to the layout.



Note: Please be advised that the front elevation and interior photos shown are of the same model for illustration purposes only. The actual home's style, interior colors, and finishes may vary. Call today!

Unlock Your First Home with the GST Rebate!

The First-Time Home Buyers' GST Rebate could save you up to \$50,000 on a new home! You must be 18+, a Canadian citizen or permanent resident, and haven't owned or lived in a home you or your spouse/common-law partner owned in the last four years.

This is a LIMITED-TIME opportunity! Homes placed under contract after May 27, 2025 are eligible, Terms and conditions are subject to the Government of Canada/CRA rules and guidelines.

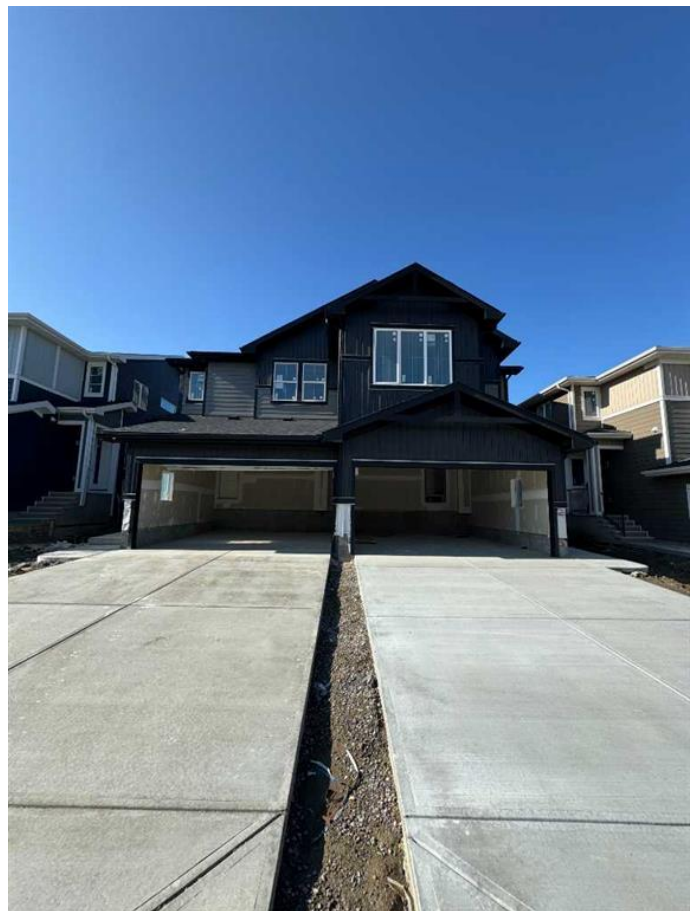
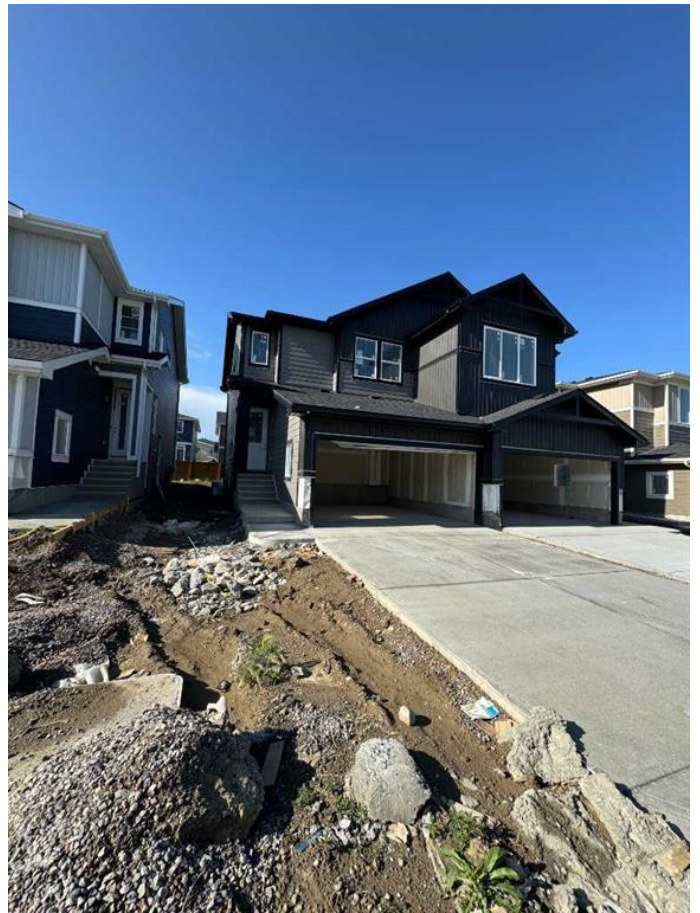
Built in 2025

### Essential Information

MLS® #	A2208242
Price	\$574,900
Bedrooms	3
Bathrooms	3.00
Full Baths	2
Half Baths	1
Square Footage	1,571
Acres	0.07
Year Built	2025
Type	Residential
Sub-Type	Semi Detached
Style	2 Storey, Side by Side
Status	Active

### Community Information

Address	253 Waterford Way
Subdivision	NONE



City	Chestermere
County	Chestermere
Province	Alberta
Postal Code	T1X 2Z9

### Amenities

Parking Spaces	2
Parking	Double Garage Attached
# of Garages	2

### Interior

Interior Features	Double Vanity, High Ceilings, Kitchen Island, Quartz Counters, Separate Entrance
Appliances	Dishwasher, Electric Stove, Microwave Hood Fan, Refrigerator
Heating	Forced Air
Cooling	None
Fireplace	Yes
# of Fireplaces	1
Fireplaces	Electric
Has Basement	Yes
Basement	Full, Unfinished

### Exterior

Exterior Features	None
Lot Description	City Lot, Level, Rectangular Lot
Roof	Asphalt Shingle
Construction	Mixed, Vinyl Siding
Foundation	Poured Concrete

### Additional Information

Date Listed	April 3rd, 2025
Days on Market	107
Zoning	R-3

### Listing Details

Listing Office	First Place Realty
----------------	--------------------

Data is supplied by Pillar 9â„¢ MLS® System. Pillar 9â„¢ is the owner of the copyright in its MLS® System. Data is deemed reliable but is not guaranteed accurate by Pillar 9â„¢. The trademarks MLS®, Multiple Listing Service® and the associated logos are owned by The Canadian Real Estate Association (CREA) and identify the quality of services provided by real estate professionals who are members of CREA. Used under license.