

# \$1,675,000 - 107 40 Avenue Ne, Calgary

MLS® #A2208101

**\$1,675,000**

3 Bedroom, 4.00 Bathroom, 1,228 sqft  
Residential on 0.16 Acres

Highland Park, Calgary, Alberta

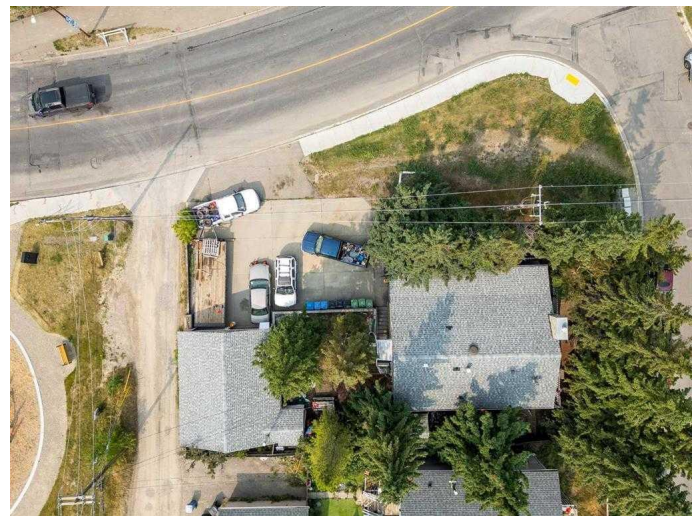
HOUSE BEING SOLD "AS IS WHERE IS" , land value. Located in mature community of Highland park, this corner lot is zoned as M-H1, multi-residential with main floor commercial development, allowing up to a maximum of 8 stories( 26 m) in height, and would offer stunning views, including of downtown. This location is considered a traffic collector/corner lot ( TRC/CRL) in City property details, and is next to location of future GREEN LINE LRT. Multiple buses including bus to AIRPORT are close by. Strategically located to local landmarks, shopping, schools, playgrounds, restaurants, and more residential and commercial amenities, as well as easy access to City downtown core.

INVESTORS/BUILDERS/DEVELOPERS, don't miss out on this fantastic opportunity.

Built in 1910

## Essential Information

MLS® #	A2208101
Price	\$1,675,000
Bedrooms	3
Bathrooms	4.00
Full Baths	3
Half Baths	1
Square Footage	1,228
Acres	0.16
Year Built	1910



Type	Residential
Sub-Type	Detached
Style	Bungalow
Status	Active

### **Community Information**

Address	107 40 Avenue Ne
Subdivision	Highland Park
City	Calgary
County	Calgary
Province	Alberta
Postal Code	T2E 2M6

### **Amenities**

Parking Spaces	5
Parking	Double Garage Detached, Oversized, Parking Pad
# of Garages	2

### **Interior**

Interior Features	See Remarks
Appliances	See Remarks
Heating	Forced Air, Natural Gas
Cooling	None
Fireplace	Yes
# of Fireplaces	1
Fireplaces	Gas
Has Basement	Yes
Basement	Full, Suite, Walk-Out

### **Exterior**

Exterior Features	Balcony, Playground
Lot Description	Back Lane, Corner Lot, Front Yard, Many Trees, Rectangular Lot, Sloped
Roof	Asphalt Shingle
Construction	Wood Frame, Wood Siding
Foundation	Poured Concrete

### **Additional Information**

Date Listed	April 8th, 2025
-------------	-----------------

Days on Market 15  
Zoning M-H1

## **Listing Details**

Listing Office Royal LePage Benchmark

Data is supplied by Pillar 9â,,ç MLSÂ® System. Pillar 9â,,ç is the owner of the copyright in its MLSÂ® System. Data is deemed reliable but is not guaranteed accurate by Pillar 9â,,ç. The trademarks MLSÂ®, Multiple Listing ServiceÂ® and the associated logos are owned by The Canadian Real Estate Association (CREA) and identify the quality of services provided by real estate professionals who are members of CREA. Used under license.