

\$659,093 - 565 Chelsea Gardens, Chestermere

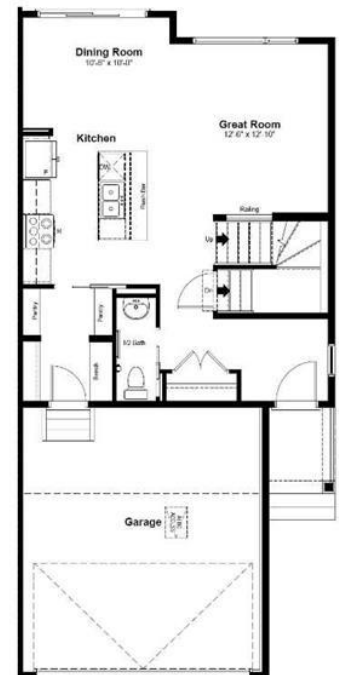
MLS® #A2191935

\$659,093

3 Bedroom, 3.00 Bathroom, 1,548 sqft
Residential on 0.08 Acres

Chelsea_CH, Chestermere, Alberta

Welcome to this stunning walk-out semi-detached home backing onto a serene pond in the highly sought-after community of Chelsea. This beautiful Paired 520 Model offers 1,548 sqft of thoughtfully designed living space, featuring 3 bedrooms, 2.5 bathrooms, and a stylish prairie elevation. The price includes architectural allowances and premium upgrades, making this home an exceptional value. Price includes the upgrades like the Walk Out Treatment, 9â€™™ Basement Foundation, 12'x10' Walk Out Deck, 2cm quartz counters throughout, 8ft front door and overhead 8ft garage door, iron spindle railing from main floor to the top floor, soft closing cabinets, kitchen cabinet under lighting, LG appliances including washer and dryer. The main floor boasts a modern kitchen with a chimney hood fan, soft-close cabinets, and under-cabinet lighting, along with a spacious dining area and bright living roomâ€”perfect for entertaining. Upstairs, you'll find three generous bedrooms, including a primary suite with a 4-piece ensuite and a large walk-in closet, plus a convenient laundry area. The undeveloped walk-out basement features large windows, offering endless potential and breathtaking pond views. Don't miss your chance to own this incredible home.



MAIN FLOOR PLAN
696 SQ.FT.

Built in 2025

Essential Information

MLS® #	A2191935
Price	\$659,093
Bedrooms	3
Bathrooms	3.00
Full Baths	2
Half Baths	1
Square Footage	1,548
Acres	0.08
Year Built	2025
Type	Residential
Sub-Type	Semi Detached
Style	2 Storey, Side by Side
Status	Active

Community Information

Address	565 Chelsea Gardens
Subdivision	Chelsea_CH
City	Chestermere
County	Chestermere
Province	Alberta
Postal Code	T1X 2V4

Amenities

Parking Spaces	4
Parking	Double Garage Attached, Off Street
# of Garages	2

Interior

Interior Features	Bathroom Rough-in, Granite Counters, Kitchen Island, No Animal Home, No Smoking Home, Open Floorplan, Pantry, Separate Entrance, Vaulted Ceiling(s)
Appliances	Dishwasher, Dryer, Electric Stove, Garage Control(s), Microwave, Range Hood, Refrigerator, Washer
Heating	Forced Air
Cooling	None
Has Basement	Yes
Basement	Exterior Entry, Full, Unfinished, Walk-Out

Exterior

Exterior Features None
Lot Description Back Yard, Backs on to Park Environmental Reserve, No Neighbors
Roof Asphalt Shingle
Construction Vinyl Siding, Wood Frame
Foundation Poured Concrete

Additional Information

Date Listed February 3rd, 2025
Days on Market 62
Zoning TBD

Listing Details

Listing Office PREP Realty



UPPER FLOOR PLAN
852 SQ.FT.

Data is supplied by Pillar 9â„¢ MLSÂ® System. Pillar 9â„¢ is the owner of the copyright in its MLSÂ® System. Data is deemed reliable but is not guaranteed accurate by Pillar 9â„¢. The trademarks MLSÂ®, Multiple Listing ServiceÂ® and the associated logos are owned by The Canadian Real Estate Association (CREA) and identify the quality of services provided by real estate professionals who are members of CREA. Used under license.