

\$799,900 - 721072 Range Road 53, Rural Grande Prairie No. 1, County of

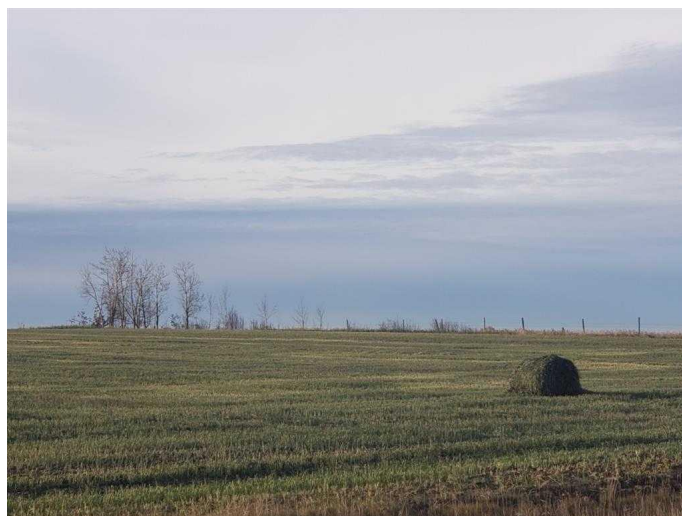
MLS® #A2190647

\$799,900

0 Bedroom, 0.00 Bathroom,
Commercial on 9.64 Acres

Crossroads South, Rural Grande Prairie No. 1,
County of, Alberta

9.64 acres - vacant land in Crossroads South,
zoned RM-2



Essential Information

MLS® #	A2190647
Price	\$799,900
Bathrooms	0.00
Acres	9.64
Type	Commercial
Sub-Type	Industrial
Status	Active

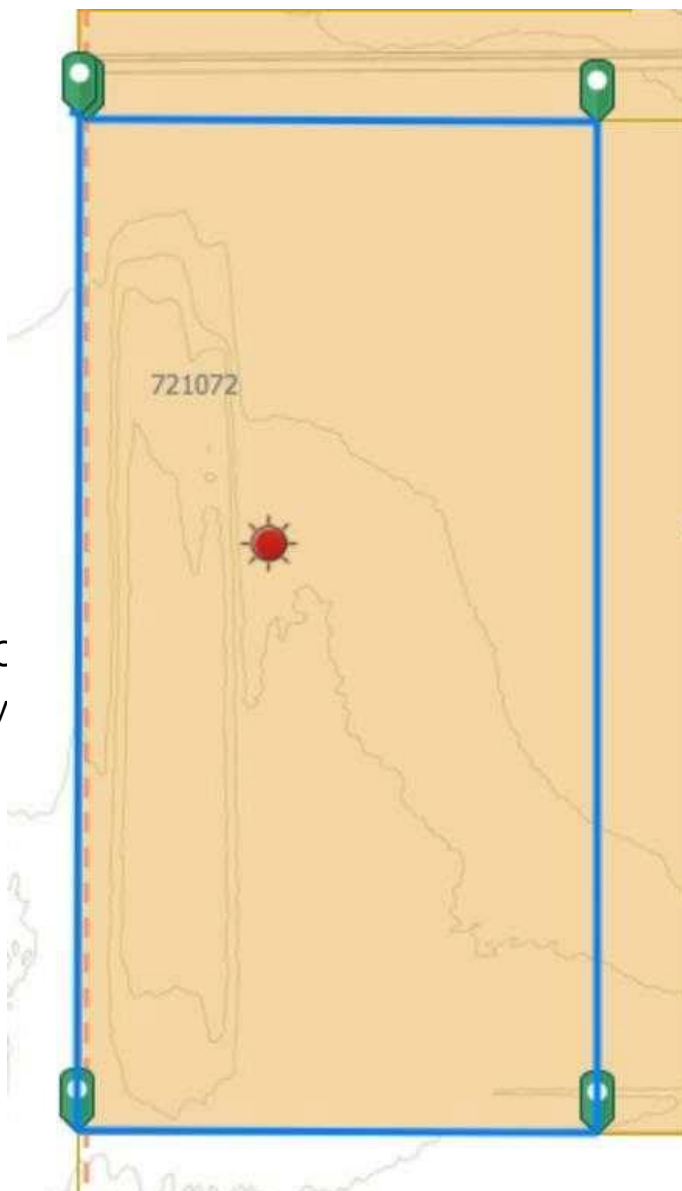
Community Information

Address	721072 Range Road 53
Subdivision	Crossroads South
City	Rural Grande Prairie No. 1, C
County	Grande Prairie No. 1, County
Province	Alberta
Postal Code	T8X 0N5

Additional Information

Date Listed	January 29th, 2025
Days on Market	185
Zoning	RM-2

Listing Details



Data is supplied by Pillar 9â„¸ MLSÂ® System. Pillar 9â„¸ is the owner of the copyright in its MLSÂ® System. Data is deemed reliable but is not guaranteed accurate by Pillar 9â„¸. The trademarks MLSÂ®, Multiple Listing ServiceÂ® and the associated logos are owned by The Canadian Real Estate Association (CREA) and identify the quality of services provided by real estate professionals who are members of CREA. Used under license.