

\$710,000 - 102, 151 4 Street Ne, Calgary

MLS® #A2184019

\$710,000

0 Bedroom, 0.00 Bathroom,
Commercial on 0.00 Acres

Bridgeland/Riverside, Calgary, Alberta

Click brochure link for more information**

Situated on the border of the highly desirable communities of Crescent Heights and Bridgeland, positioned at the base of a completely sold-out 220-unit residential condominium project. The opportunity presents phenomenal main floor presence to 4th Street NE with high-profile end caps maximizing light and exposure, fronting 1st Avenue NE and Marsh Road NE respectively. Immediately adjacent to a well-established commercial and residential node of medium to high-density residential, award-winning restaurants, and popular retail services.



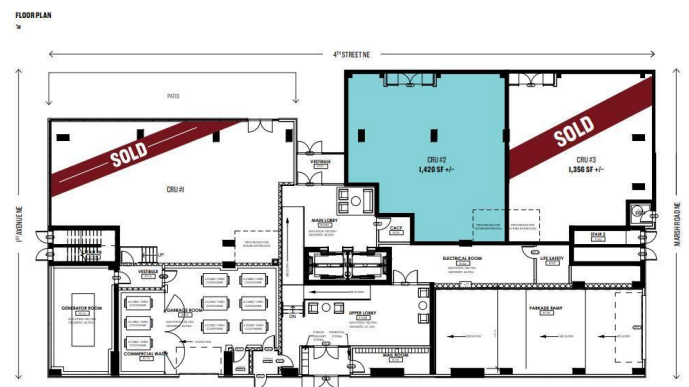
Built in 2023

Essential Information

| | |
|------------|------------|
| MLS® # | A2184019 |
| Price | \$710,000 |
| Bathrooms | 0.00 |
| Acres | 0.00 |
| Year Built | 2023 |
| Type | Commercial |
| Sub-Type | Retail |
| Status | Active |

Community Information

| | |
|-------------|----------------------|
| Address | 102, 151 4 Street Ne |
| Subdivision | Bridgeland/Riverside |
| City | Calgary |



| | |
|-------------|---------|
| County | Calgary |
| Province | Alberta |
| Postal Code | T2E8K3 |

Amenities

| | |
|----------------|---|
| Parking Spaces | 2 |
|----------------|---|

Additional Information

| | |
|----------------|---------------------------|
| Date Listed | December 17th, 2024 |
| Days on Market | 213 |
| Zoning | DIRECT CONTROL 9D2015 FOL |

Listing Details

| | |
|----------------|-----------------|
| Listing Office | Honestdoor Inc. |
|----------------|-----------------|

Data is supplied by Pillar 9â„¢ MLS® System. Pillar 9â„¢ is the owner of the copyright in its MLS® System. Data is deemed reliable but is not guaranteed accurate by Pillar 9â„¢. The trademarks MLS®, Multiple Listing Service® and the associated logos are owned by The Canadian Real Estate Association (CREA) and identify the quality of services provided by real estate professionals who are members of CREA. Used under license.