

\$395,000 - 9820 99 Avenue, Lac La Biche

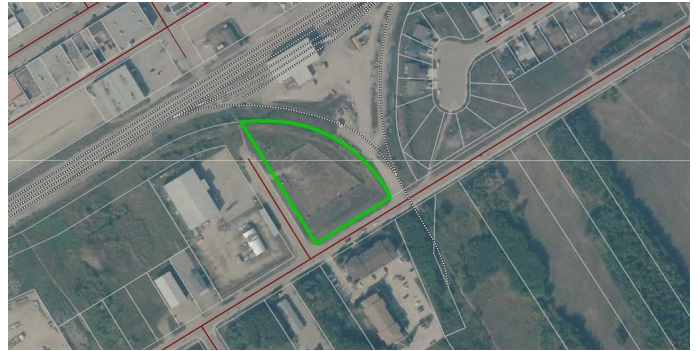
MLS® #A2164958

\$395,000

0 Bedroom, 0.00 Bathroom,
Land on 2.13 Acres

Lac La Biche, Lac La Biche, Alberta

Unlock the potential of this versatile commercial vacant lot, perfectly situated in the thriving community of Lac la Biche County. Corner lot is level and landscaped with approximately 0.7 acres fenced. This prime piece of real estate offers a unique opportunity for a variety of business ventures, making it an ideal investment for entrepreneurs and developers alike. This 2.13 acre lot has many permitted uses such as Child Care, Multi use, Retail, Storage, Animal care and office ... just to name a few. Call today for your personal viewing or additional information



Essential Information

MLS® #	A2164958
Price	\$395,000
Bathrooms	0.00
Acres	2.13
Type	Land
Sub-Type	Commercial Land
Status	Active

Community Information

Address	9820 99 Avenue
Subdivision	Lac La Biche
City	Lac La Biche
County	Lac La Biche County
Province	Alberta
Postal Code	t0a 2c0

Additional Information

Date Listed September 13th, 2024
Days on Market 181
Zoning Arterial Commercial/Shopp

Listing Details

Listing Office RE/MAX LA BICHE REALTY

Data is supplied by Pillar 9â„¸ MLSÂ® System. Pillar 9â„¸ is the owner of the copyright in its MLSÂ® System. Data is deemed reliable but is not guaranteed accurate by Pillar 9â„¸. The trademarks MLSÂ®, Multiple Listing ServiceÂ® and the associated logos are owned by The Canadian Real Estate Association (CREA) and identify the quality of services provided by real estate professionals who are members of CREA. Used under license.