

# \$319,000 - 58, 704016 Range Road 70, Rural Grande Prairie No. 1, County of

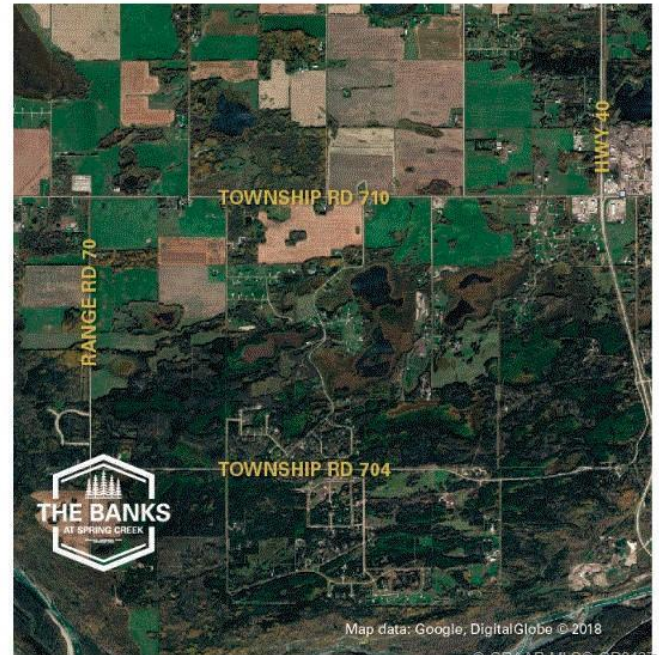
MLS® #A2099439

**\$319,000**

0 Bedroom, 0.00 Bathroom,  
Land on 3.11 Acres

Two Hills, Rural Grande Prairie No. 1, County of, Alberta

THE BANKS AT SPRING CREEK - TREED ACREAGES !!! CITY WATER SERVICE!!! 2.5 - 5.5 acre lots in the new exclusive The Banks at Spring Creek subdivision, Beautifully treed, contoured lands with walkout basement potential on most..... exclusive lots on the banks hold view over Spring Creek Valley, This is arguably one of the most beautiful landscapes in the Grande Prairie area less than 10 minutes from town West of the Nordic Ski Trails or just south of correction line....



© GPAAR MLS® GP213714



© GPAAR MLS® GP213714

## Essential Information

|           |                  |
|-----------|------------------|
| MLS® #    | A2099439         |
| Price     | \$319,000        |
| Bathrooms | 0.00             |
| Acres     | 3.11             |
| Type      | Land             |
| Sub-Type  | Residential Land |
| Status    | Active           |

## Community Information

|             |                                       |
|-------------|---------------------------------------|
| Address     | 58, 704016 Range Road 70              |
| Subdivision | Two Hills                             |
| City        | Rural Grande Prairie No. 1, County of |
| County      | Grande Prairie No. 1, County of       |
| Province    | Alberta                               |

Postal Code            T0H 3V0

**Additional Information**

Date Listed            January 3rd, 2024  
Days on Market        483  
Zoning                 CR-2

**Listing Details**

Listing Office           RE/MAX Grande Prairie

Data is supplied by Pillar 9â„¸ MLSÂ® System. Pillar 9â„¸ is the owner of the copyright in its MLSÂ® System. Data is deemed reliable but is not guaranteed accurate by Pillar 9â„¸. The trademarks MLSÂ®, Multiple Listing ServiceÂ® and the associated logos are owned by The Canadian Real Estate Association (CREA) and identify the quality of services provided by real estate professionals who are members of CREA. Used under license.