

\$702,000 - 1000 15 Avenue Sw, Slave Lake

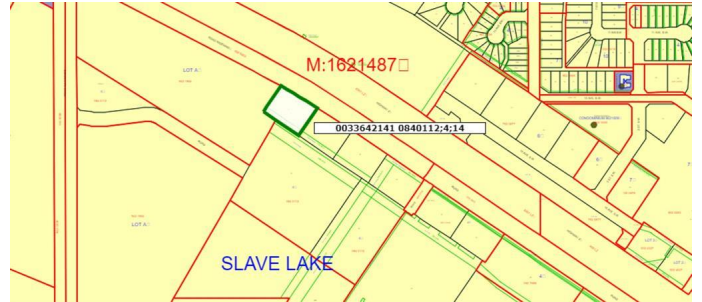
MLS® #A1152098

\$702,000

0 Bedroom, 0.00 Bathroom,
Land on 1.06 Acres

NONE, Slave Lake, Alberta

Perfect opportunity awaits your business, from this front highway commercial property! Fully serviced.



Essential Information

MLS® #	A1152098
Price	\$702,000
Bathrooms	0.00
Acres	1.06
Type	Land
Sub-Type	Commercial Land
Status	Active

Community Information

Address	1000 15 Avenue Sw
Subdivision	NONE
City	Slave Lake
County	Lesser Slave River No. 124, M.D. of
Province	Alberta
Postal Code	T0G 2A4

Additional Information

Date Listed	October 5th, 2021
Days on Market	707
Zoning	C3

Listing Details

Listing Office	ROYAL LEPAGE PROGRESSIVE RLTY
----------------	-------------------------------

Data is supplied by Pillar 9â„¢ MLS® System. Pillar 9â„¢ is the owner of the copyright in its MLS® System. Data is

deemed reliable but is not guaranteed accurate by Pillar 9â„¸. The trademarks MLS®®, Multiple Listing Service® and the associated logos are owned by The Canadian Real Estate Association (CREA) and identify the quality of services provided by real estate professionals who are members of CREA. Used under license.